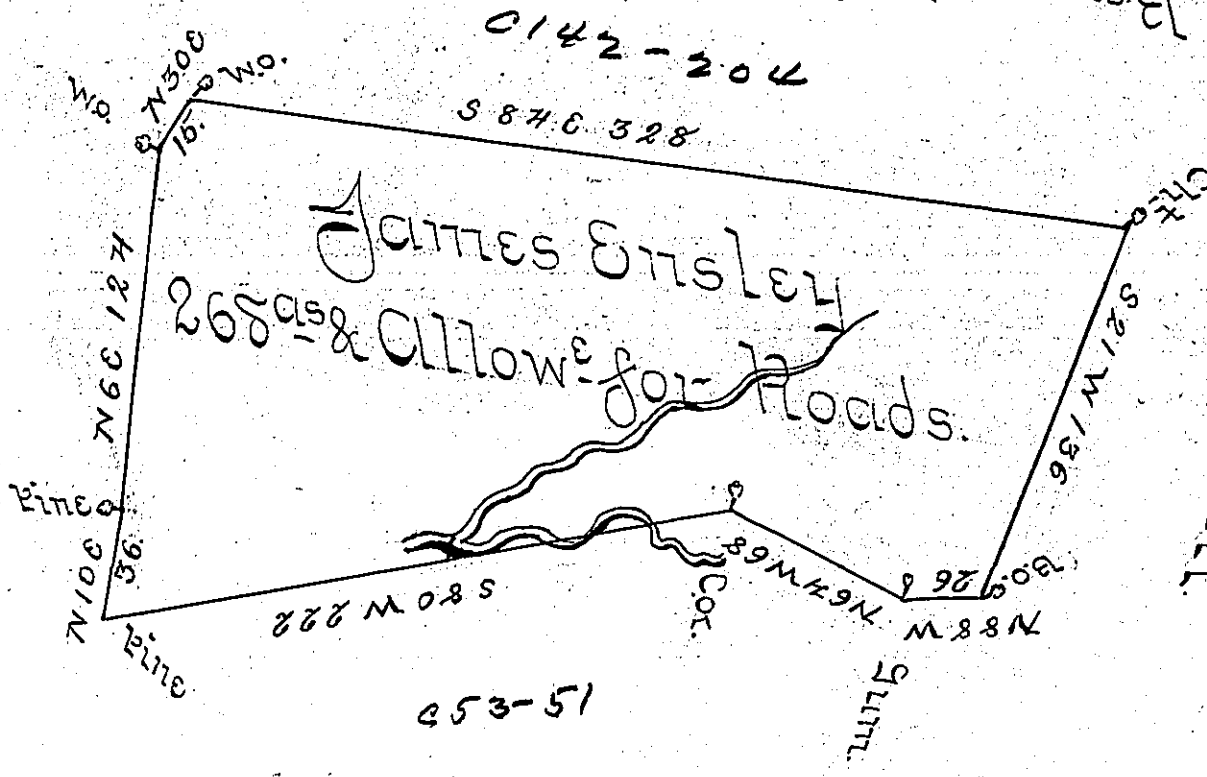


William Boyds Claim

Benjamin Miers Land



Rais Hill

John McKinney

A Draught of a Tract of Land Situate on both sides of the Road leading from Bedford Crossing to the saw mill Adjoining Land of Benjamin Miers and John McKinney in Providence Township in the County of Bedford Containing Two hundred and sixty eight Acres with the usual Allowance of six per Cent for Roads &c<sup>a</sup> Surveyed for James Ensley 1786 In Pursuance of a Warrant Dated November 10<sup>th</sup> 1785 =

George Woods U.S.

To John Lukens Esq<sup>r</sup> 59.

IN TESTIMONY that the above is a copy of the original remaining on file in the Department of Internal Affairs of Pennsylvania, made conformably to an Act of Assembly approved the 16th day of February, 1833, I have hereunto set my Hand and caused the Seal of said Department to be affixed at Harrisburg, this fifth day of August 1902.

*James W. Fatta*  
Secretary of Internal Affairs.